

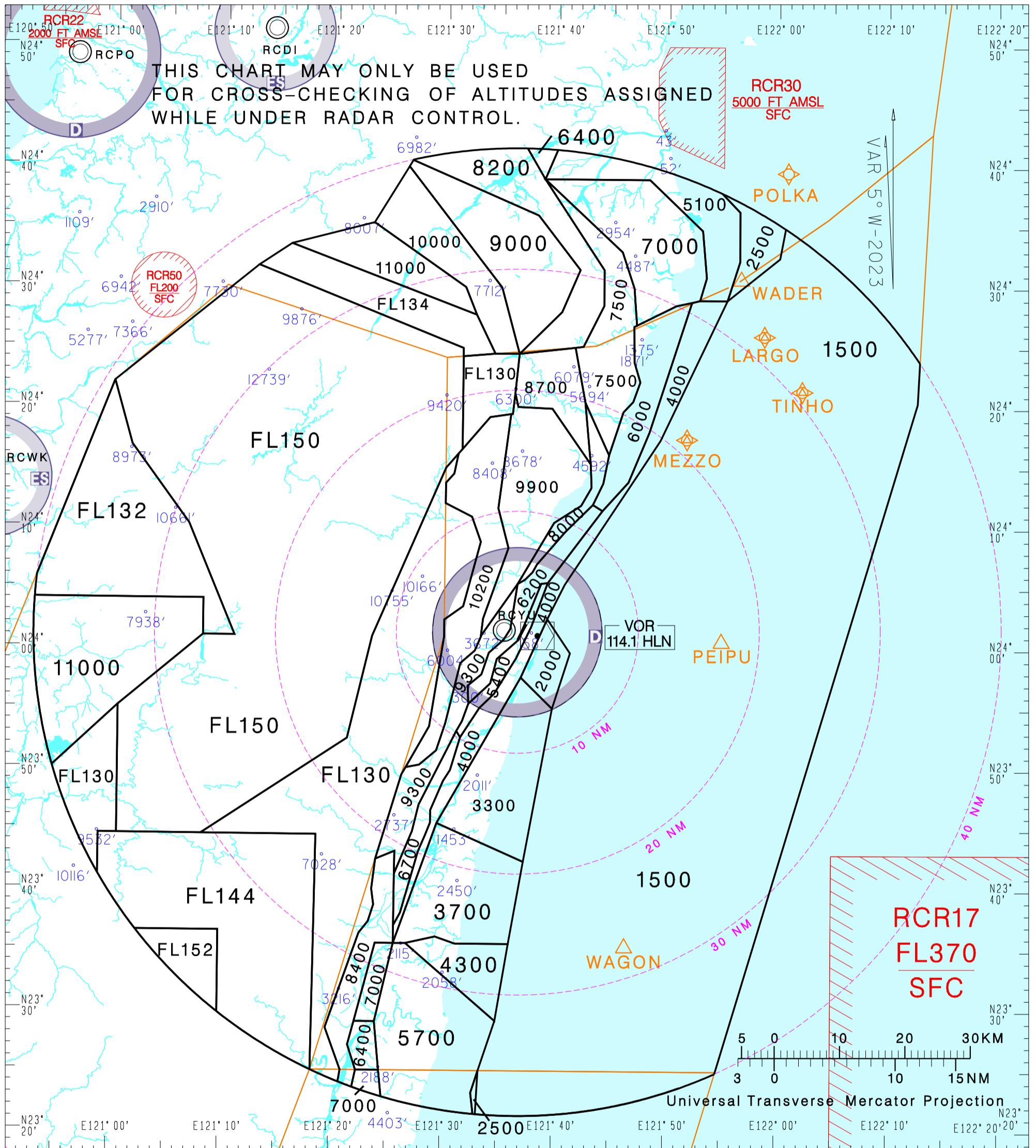
航管監視最低高度圖  
ATC Surveillance  
Minimum Altitude Chart

AD ELEV. Trans  
RCYU 51FT Level:FL130  
Alt:11,000'

TAIPEI APP	
124.0	
119.1	
330.2	276.8

HUALIEN TOWER	
118.1	
126.18	
236.6	

花蓮機場 Hualien Aerodrome



NOTE

- Distance circles are centred on RCUY ARP(240124N 1213636E).
- Minimum altitudes are calculated taking into account of minimum clearance above terrain/obstacles.  
Radar control service cannot be provided to aircraft below the applicable minimum.  
Aircraft at designated altitude in relevant sector is not assured of radar contact.
- Altitudes, Levels, Heights are in feet.
- Only significant spot heights are shown.
- LOSS OF COMMUNICATION
  - SQUAWK 7600 immediately, and
  - follow AIP ENR 1.6.4 "Radio Communication Failure Procedures."

CHANGES: RECHART